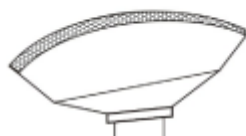
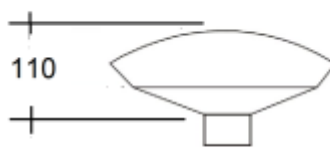


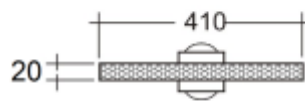
F7



Ø85



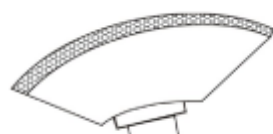
110



20

Model	Code	Features	Diameter Ø(mm)	Heating W	Volt
F7	104-07-000	INOX Buck for external collar seam. Used without covers	85	-	-

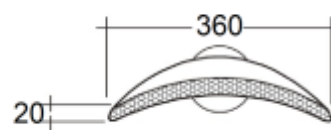
F12



Ø85



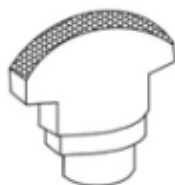
100



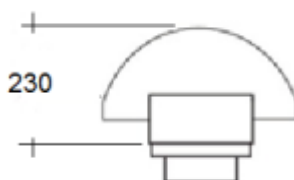
20

Model	Code	Features	Diameter Ø(mm)	Heating W	Volt
F12	104-12-000	INOX collar Buck Used without covers	85	-	-

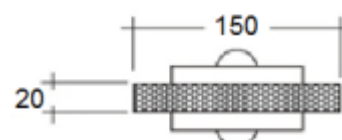
F11



Ø85



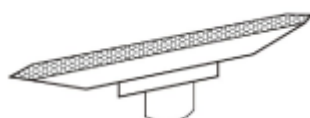
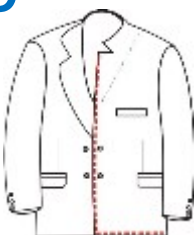
230



20

Model	Code	Features	Diameter Ø(mm)	Heating W	Volt
F11	104-11-000	Sleeve head seam buck. Used without covers	85	-	-

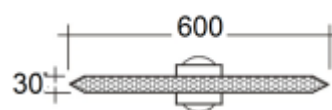
F9



Ø85



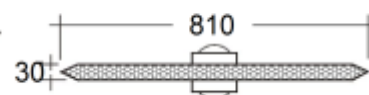
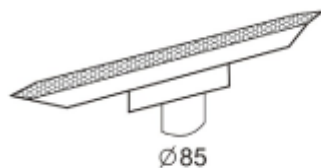
50



30

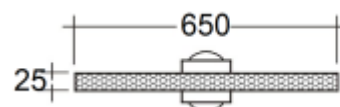
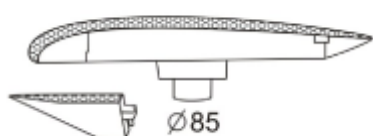
Model	Code	Features	Diameter Ø(mm)	Heating W	Volt
F9	104-09-000	Inox narrow buck for edges and corners. Used without covers	85	-	-

F10



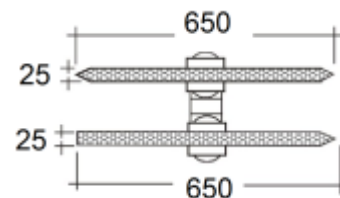
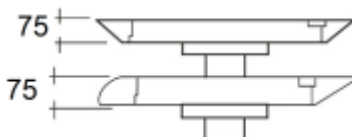
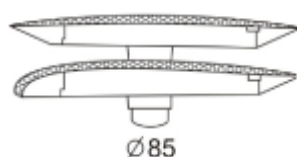
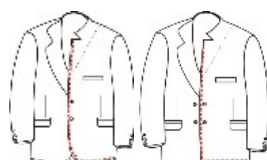
Model	Code	Features	Diameter Ø(mm)	Heating W	Volt
F10	104-10-000	Inox narrow buck for edges and corners. Used without covers	85	-	-

F21



Model	Code	Features	Diameter Ø(mm)	Heating W	Volt
F21	104-30-000	Inox buck for front edge and collar seam opening with removable edges . Used without covers	85	-	-

F22



Model	Code	Features	Diameter Ø(mm)	Heating W	Volt
F22	104-31-000	Double Inox buck for front edge and collar seam opening with removable edges . Used without covers	85	-	-