

SG 15

High pressure electric steam generator 6 bar.

The electric steam generator SG15 was designed for usage in connection with steam line for 4-7 steam irons, steam presses, finishers toppers and and other steam consumers.

Equipped with fault detection program and electronic keyboard with touch buttons. All functions are electronically controlled by a PCB.

It is the best choice for replacement a built-in boiler of a machine (finisher, ironing table etc)



Comes with a built-in water pump

Extra accessories: Inox water tank 75L (E/T7515)

Steel Boiler:.....17 L

Operating pressure:.....6 bar

Model	Code	Features	Volt	Heating kW	Steam Kg/h
SG 15	103-04-000	Steam supply for 4-7 irons built-in water pump	400	18	23,4

Packaging	Dimensions	Net Weight Kg	Gross Weight Kg
Wooden box (Only SG15)	89 x 64 x 78 cm	70	95
Wooden box (SG15 & E/T7515)	120 x 65 x100 cm	70	115

Accessories:

Model	Code	Description
E/T7515	103-04-010	Inox water tank – 75 L with float tank and connection material
K6/2	108-00-000	Steam condenser unit for steam and power supply from the mains to steam irons
AD/5	108-01-000	Small steam condenser. Unit for steam and power supply from the mains to steam irons
STEAM LINE		Steam line depending on the request



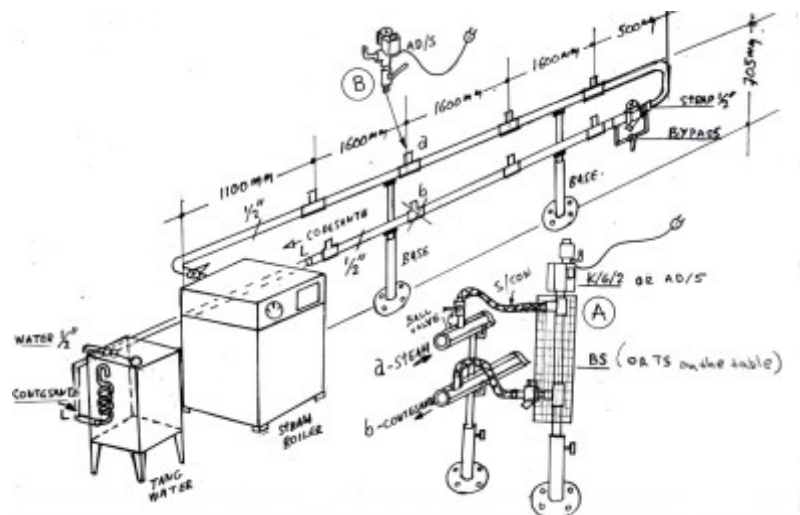
E/T7515



K6/2



AD/5



Steam Line